

Cytotoxic Effects of Different Aromatic Plants Essential Oils on Oral Squamous Cell Carcinoma- an *in vitro* Study

SUMMARY

Background/Aim: Current approaches in therapy of head and neck cancers are surgery, radiotherapy and chemotherapy. However, recurrence, development of multidrug resistance, side effects, and high costs of therapy are significant problems which point to the need for more efficient and less toxic drugs and interventions. **Material and Methods:** Eight essential oils obtained from *Thymus serpyllum*, *Mentha piperita*, *Juniperus communis*, *Rosmarinus officinalis*, *Melissa officinalis*, *Achillea millefolium*, *Zingiber officinale*, and *Helichrysum arenarium* were tested for their anti-proliferative on oral squamous cell carcinoma (OSCC) culture and SCC-25 cell line. Cytotoxicity assays (MTT and Neutral red) were used to detect the effect of the mentioned essential oils. **Results:** *T. serpyllum*, *M. piperita*, *J. communis*, and *R. officinalis* essential oils exhibited the best anti-proliferative effect, on both types of cells. *M. piperita* had the greatest effect on SCC-25 cell line (4,5% of viable cells) and OSCC cells (7,2% of viable cells). Overall, cytotoxicity was higher in OSCC than in SCC-25 cell line. **Conclusions:** This study showed a clear anti-proliferative effect of four essential oils, *in vitro* making them novel potential antineoplastic agents.

Key words: Essential Oils, Cytotoxicity, Squamous Cell Carcinoma, Cell Cultures

Miloš Lazarević^{1,2}, Maja Milošević^{1,2},
Nada Petrović³, Slobodan Petrović³,
Giuseppe Damante⁴, Jelena Milišić¹,
Branislav Milovanović⁵

¹ Department of Human Genetics, School of Dental Medicine, University of Belgrade, Serbia

² Clinic of Maxillofacial Surgery, School of Dental Medicine, University of Belgrade, Serbia

³ Development and Production Center BIOS – PS and Others, Belgrade, Serbia

⁴ Department of Medical Area, University of Udine, 33100 Udine, Italy

⁵ Department of Cardiology, University Hospital Medical Center Bežanijska Kosa, Medical Faculty, University of Belgrade, Serbia

ORIGINAL PAPER (OP)

Balk J Dent Med, 2019;73-79

Introduction

Head and neck cancer (HNC) represents a great public health problem as the 6th most common cancer in developed countries with approximately 350,000 deaths every year¹. The great percentage of HNC is oral cancer (85%), mostly oral squamous cell carcinoma (OSCC). Despite significant advances in a modern therapy, rates of survival for these patients have only moderately improved during the last two decades^{2,3}. Current approaches in therapy of this type of cancer are surgery, radiotherapy, and chemotherapy. However, recurrence, development of multidrug resistance, side effects, and high costs of therapy are significant problems which point to the need for more efficient and less toxic drugs and interventions.

In the last 15 years cytotoxic and anti-proliferative potential of different essential oils has been explored in several types of cancer⁴. From the current literature they

seem to have a great prospective as anticancer therapeutic agents or as adjuvant therapeutics.

Several herbal products derived from mint (*Lamiaceae*) family have shown anti-carcinogenic properties. One important genus of the mint family is *Thymus* with about 350 species worldwide⁵ and it has been used in traditional medicine for thousands of years in countries of the Mediterranean basin. Thyme is usually administrated as expectorant in upper respiratory tract infection, and thymol is often the main antiseptic ingredient in mouth rinses. Essential oil of the most studied species- *Thyme vulgaris*, and its principal component thymol has been shown to have antifungal, antibacterial, antioxidant⁶ and anticancer effect⁷.

From the same plant family, *Mentha piperita* or peppermint has a long history of safe use, both in medicinal preparations and as a flavoring agent. The cytotoxic effect of *Mentha* has been tested on several

tumors (cervical, breast, colon adenocarcinoma and other) and it has proved to be a valid antitumor agent⁸.

Several studies have been conducted to verify the effects of *Achillea millefolium*. Anti-inflammatory⁹, antioxidant, antimicrobial¹⁰, liver protective¹¹, anti-secretory and gastro-protective features have also been detected¹².

A recent study has found that the extract of *Rosmarinus officinalis*, which also belongs to mint family, contains polyphenols (carnosic acid and rosmarinic acid) possesses clear anticancer potential¹³. *Melissa officinalis* essential oil has been shown to have antibacterial, antifungal, and spasmolytic effects¹⁴. Also, studies on lung, colon and breast cancer, as well as on leukemia and glioblastoma multiforme cancer cell lines, have shown that *M. officinalis* inhibited tumor cell viability and induced apoptosis in resistant tumor cells, which all suggests their antitumor potential¹⁵. *Juniperus communis* belongs to the *Cupressaceae* family and has been used as therapeutic agent in traditional medicine. Recent studies have reported strong antioxidant¹⁶, antibacterial¹⁷, anti-inflammatory, as well as anticancer effects in colorectal and cervical cancer¹⁸.

The aim of this study was to investigate anti-proliferative effects of *Thymus serpyllum*, *Mentha piperita*, *Juniperus communis*, *Rosmarinus officinalis*, *Melissa officinalis*, *Achillea millefolium*, *Zingiber officinale*, and *Helichrysum arenarium* on primary OSCC cells culture and an oral cancer cell line (SCC-25), as control.

Material and Methods

Plant material and method of extraction

All herbs originated from Serbia. Essential oils were isolated from dried plant material by hydro-distillation process in semi-industrial distillation device SP-130, which works on the principle of distillation water and steam. The temperature during the hydro-distillation in device SP-130 ranged from 100°C to 102°C at atmospheric pressure. All the extracted essential oils were liquids of light yellow, green or brown color and their odor was characteristic of the distilled aromatic herbs. Semi-industrial distillation device SP-130 is a discontinuous device with the volume of 130l. The process of steam distillation with the device SP-130 has many advantages over the existing ones¹⁹⁻²¹. In distillers with large volume, it is almost impossible to control the behavior of the steam and preserve essential properties of the treated oil feedstock (especially in the lower layers). The device SP - 130 performs the separation of oil and water simultaneously by the condensation process, without any additional devices. The hydrostatic pressure of the charge did not exceed 101,325 KPa.

Cell isolation and cell line

The SCC-25 cancer cell line, originating from OSCC (ATCC® CRL- 16 28™ Rockville, MD), was maintained at 5% CO₂ and 37°C in complete growth medium containing Dulbecco's Modified Eagle Medium (DMEM) supplemented with 10% fetal bovine serum (FBS), 100 U/mL penicillin-streptomycin solution (AB), and 400 ng/ml hydrocortisone (Sigma-Aldrich, St. Louis, USA).

OSCC cells were isolated from tumor tissue immediately after surgical removal from patients who were hospitalized at the Clinic of Maxillofacial Surgery of the School of Dental Medicine, University of Belgrade. Patient was informed of the study and signed an informed consent. The study was approved by the institutional Ethical Committee (36/30) University of Belgrade, Republic of Serbia and in accordance with the Declaration of Helsinki. The isolation method was done as previously described^{22,23}. After the surgery, the samples were transported to the laboratory in DMEM supplemented with 20% FBS and AB (Sigma-Aldrich). The tissue samples were cut with blades into small pieces and seeded onto T75 cell culture flasks in complete growth medium (DMEM supplemented with 10% FBS and AB). The cells were cultivated in humidified atmosphere under standard conditions, 5% CO₂ and 37°C. Medium was discarded every 2 to 3 days and after reaching 80% of confluence, passage of the cells was done.

MTT assay

SCC-25 and primary OSCC cells were seeded at density of 10⁴ per well in 96-well culture plate and grown in complete growth medium under standard culturing conditions for 24 hours. Cells were then treated with 1500, 750 and 375 µg/ml of essential oil dissolved in dimethylsulfoxide (DMSO, Sigma-Aldrich) with complete growth medium, and cisplatin (Pfizer, New York, USA) in different dosages (10, 5 and 1 µg/ml). Negative (no cells), solvent (0,02% DMSO), and positive controls (cells in complete growth medium) were also included. After 24h of incubation, cells were washed with 100µl phosphate buffered saline (PBS) and 100µl of MTT solution was added and incubated for 3 hours²⁴. Finally, after the dissolution in isopropanol the absorbance at 560 nm was measured using a microplate reader (RT- 2100C, China) and the obtained values were presented as percentages of viability. The experiment was done in triplicate, repeated three times.

Neutral red (NR) assay

SCC-25 and primary OSCC cells were seeded in 96 well plate and incubated as described in previous assay. After 24h of incubation period the solutions were removed and replaced with 150µl of Neutral red solution (3-amino-7dimethyl- 1-2-methylphenazine hydrochloride) (Sigma-Aldrich) and incubated for 4 hours at 5% CO₂ and

37 °C. Next, the wells were washed with PBS and 150µl of Neutral red eluent (96% of ethanol:dH₂O: CH₃COOH 50:49:1) was added to each well and incubated at room temperature for 15 minutes²⁵. The absorbance was measured at 560 nm using a microplate reader (RT-2100C, China) and the obtained values were presented as percentages of viability. The experiment was done in triplicate, repeated three times.

Statistical Analysis

Student's T tests were performed in the study. Statistical significance was set at $p < 0,05$. Software package SPSS ver. 20 was used for the analyses (SPSS inc, Chicago, USA).

Results

MTT assay

T. serpyllum, *Mentha piperita*, *J. communis*, and *R. officinalis* essential oils exhibited the best anti-proliferative effect, in both types of head and neck cancer cells (Figure 1). *Mentha piperita* had the greatest effect on SCC-25 cell line (4,5% of viable cells at the highest dose) (Figure 1a) and OSCC primary cells (7,2% of viable cells at the highest dose) (Figure 1c and 2a). Overall,

the cytotoxicity of 8 essential oils was higher in OSCC cells compared to SCC-25 cell line. The effect was dose-dependent. Cisplatin, a commonly used chemotherapeutic for head and neck cancers, showed lower toxicity compared to the first group of essential oils (effective oils): *T. serpyllum*, *M. piperita*, *J. communis*, and *R. officinalis* (Figure 3a). The highest dose of cisplatin (10 µg/ml) was the most effective in OSCC cells (63% of viable cells).

Neutral red assay

To confirm the results of MTT assay, complementary NR assay was also done. NR assay showed similar cytotoxicity of essential oils compared to MTT assay. *M. piperita* had the greatest effect on SCC-25 cell line (14,4% of viable cells in the highest dose) and OSCC cells (Figure 2b and 4) (15,2% of viable cells of the highest dose). The highest, statistically significant anti-proliferative effect against OSCC and SCC-25 cells showed *T. serpyllum*, *M. piperita*, *J. communis*, and *R. officinalis* essential oils (Figure 4). Similarly to MTT assay, cisplatin showed lower toxicity compared to some essential oils. The highest dose of cisplatin (10 µg/ml) was the most effective in OSCC cells (65% of viable cells) (Figure 3b). The cytotoxic effect of cisplatin was dose-dependent.

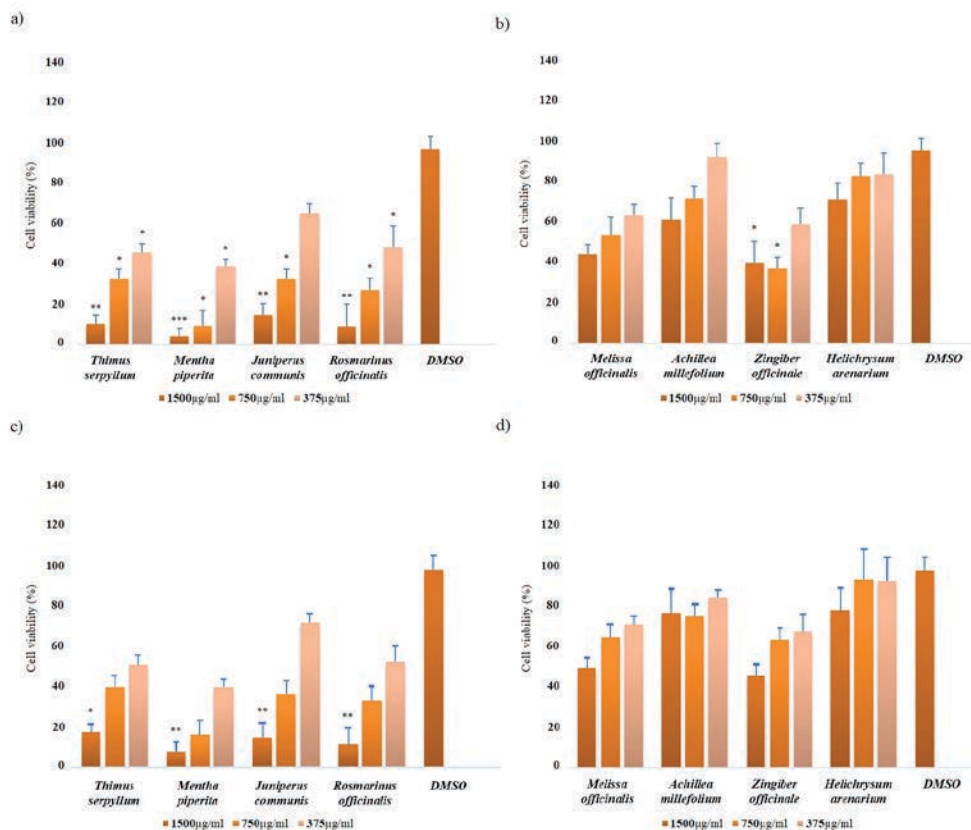


Figure 1. MTT assay after 24h treatment with essential oils on SCC-25 cells (a, b) and oral squamous cell carcinoma cells (c, d) * $p < 0,05$

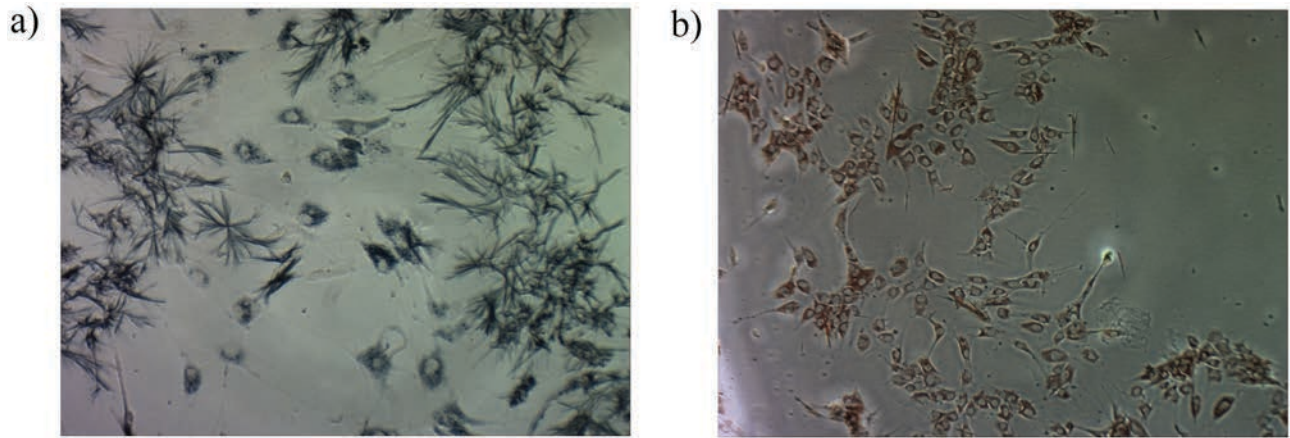


Figure 2. Native pictures of oral squamous cell carcinoma cells after 24h treatment with essential oils. MTT assay (a); Neutral red assay (b). Magnification 100x

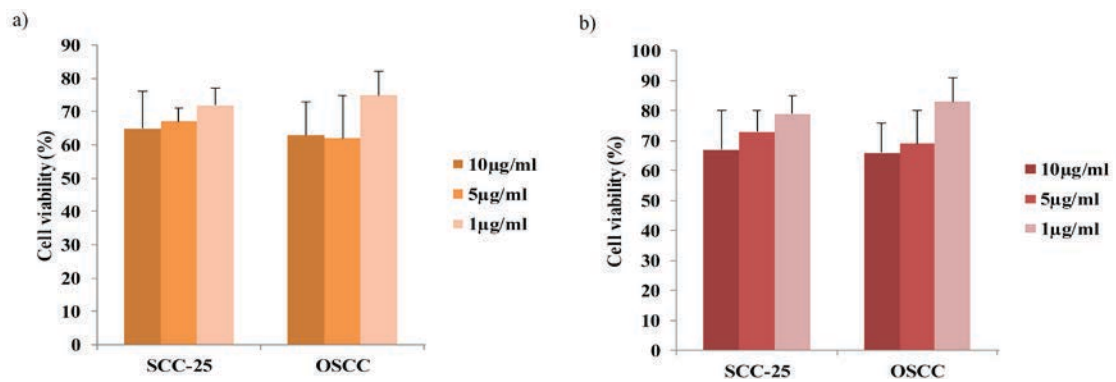


Figure 3. Cell viability after 24h treatment of cisplatin: MTT assay (a); Neutral red assay (b)

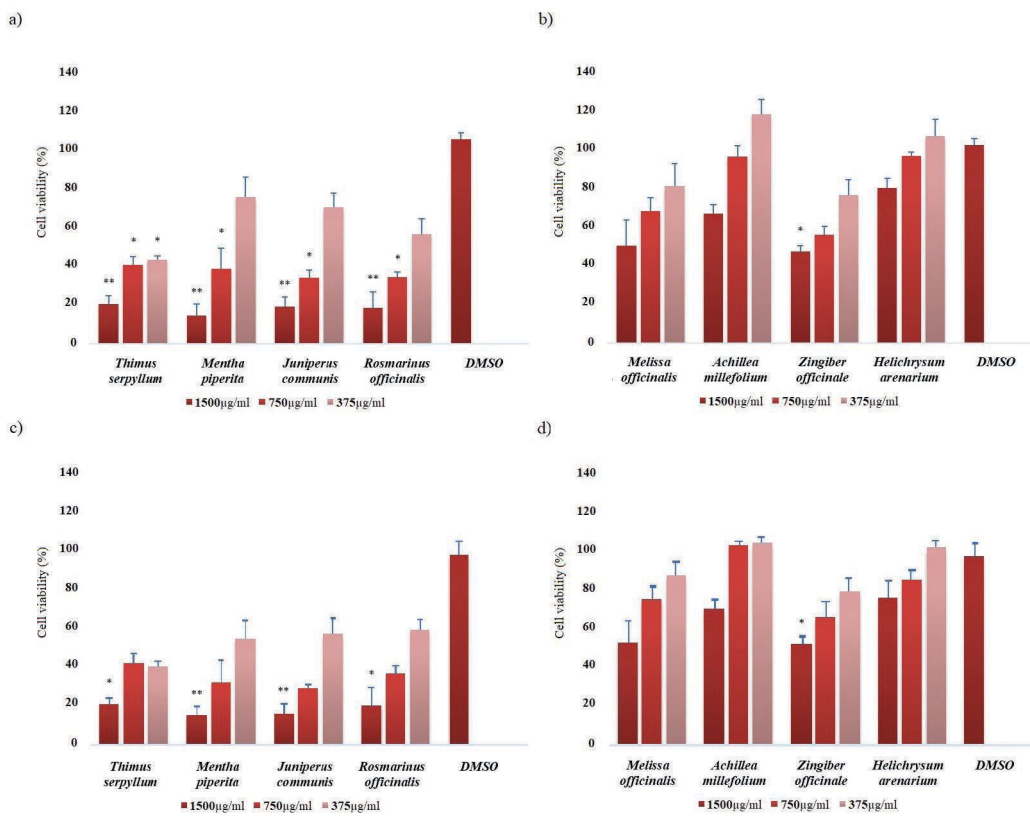


Figure 4. Neutral red assay after 24h treatment with essential oils on SCC-25 cells (a, b) and oral squamous cell carcinoma cells (c, d) * $p < 0,05$; ** $p < 0,01$

Discussion

Searching for new natural products with antineoplastic characteristics represent a fascinating field of research in oncology²⁶. Plant-derived anticancer drugs such as vinblastine, vincristine, colchicine, etc. are widely used in clinical practice²⁷⁻²⁹, but the introduction of novel compounds of plant origin, proven to be efficient in reducing tumor cell viability, should be taken into consideration as well, and potentially recommended.

In the present study, we have demonstrated cytotoxic effects of a variety of essential plant oils on cancer cell cultures. Generally, cytotoxicity of all eight essential oils was higher in OSCC than in SCC-25 cell cultures, which could be explained by differences in cell proliferative rates and chemoresistance. It must also be emphasized that, under the experimental conditions in this study, phytotherapy proved to be more efficient than the most standard cytostatic therapy used in head and neck cancer treatment, i.e. cisplatin.

M. Piperita oil had the highest antineoplastic effect on oral cancer cells, and our results support some previous findings on peppermint anticancer properties achieved *in vitro* through different mechanisms such as mitochondria mediated apoptotic pathways, increase of p53 and p21 expression, perturbation of oxidative balance, etc.⁸.

Thymus spp. is associated with the regulation of three pathways- the interferon signaling, N-glycan biosynthesis, and ERK5 signaling, all involved in cancer cell development³⁰. Higher concentrations of *T. vulgaris* essential oil showed dose-dependent cytotoxic effects in a previous study on OSCC cell line UMSCC1³⁰; the present study also observed dose-dependent anti-proliferative effect induced by *T. serpyllum* essential oil.

In accordance with the present study, *Juniperus communis* showed the capacity to inhibit cancer cell growth in two cancer cell lines-colorectal carcinoma cell line (CaCo₂) and cervical cancer cells line (HeLa)¹⁸.

To the best of our knowledge, this is the first study on oral squamous cell carcinoma cells dealing with anti-proliferative potential of *Rosmarinus officinalis* essential oil. Several *in vitro* studies using colon cancer³¹, rat RINm5F insulinoma³², breast cancer³³, pancreatic³⁴, and HeLa (Cervical adenocarcinoma)³⁵ cells lines have shown that *R. officinalis* had anticancer capacity. However, underlying mechanisms are yet to be unveiled. Recently, Moore, et al.³⁶ found that *R. officinalis* can inhibit the activation of the Akt/mTOR/p70S6K signaling pathway, which in turn leads to reduced cell proliferation.

The antitumoral effect of *Melissa officinalis* was found in different types of cancers- colon (Caco-2), breast (MCF-7), leukemia (HL-60 and K562), lung (A549), human cancer cell lines and in a mouse melanoma cell line (B16F10)¹⁵. In this study, the antitumoral effect of *M. officinalis* was not confirmed, maybe in part due to

specific conditions of essential oil production (15). Still, the dose-dependent effect was present.

Achillea millefolium had no significant effect on cell viability after 24 hour-long treatments, although its anti-proliferative potential has been reported in non-small cell lung cancer (NCI-H460) and human colorectal adenocarcinoma (HCT-15) cells³⁷.

A recent study examined the effect of two major pharmacologically active compounds of *Zingiber officinale*, 6-gingerol and 6-shogaol, on head and neck cancer cell lines³⁸ and found, similarly to this study, dose-dependent decrease of cell capacity to proliferate. However, the results of the present study did not show a significant reduction of cell number. A similar result regarding the effects on OSCC and SCC-25 cell cultures was obtained with *Helichrysum arenarium* essential oil.

Conclusions

This study showed clear anti-proliferative effects of *Thymus serpyllum*, *Mentha piperita*, *Juniperus communis* and *Rosmarinus officinalis* essential oils against OSCC primary cultures and SCC-25 cell line. However, further investigations are necessary in order to uncover the essential oil components responsible for the effect and the underlying molecular pathways.

Acknowledgments

This work was supported by the Ministry of Education, Science and Technological Development, Republic of Serbia (Grant N° 175075).

References

1. Argiris A, Karamouzis MV, Raben D, Ferris RL. Head and neck cancer. *Lancet*, 2008;371:1695-709.
2. Moore SR, Johnson NW, Pierce AM, Wilson DF. The epidemiology of mouth cancer: a review of global incidence. *Oral Dis*, 2000;6:65-74.
3. Forastiere A, Koch W, Trotti A, Sidransky D. Medical progress - Head and neck cancer. *N Engl J Med*, 2001;345:1890-1900.
4. Russo R, Corasaniti MT, Bagetta G, Morrone LA. Exploitation of cytotoxicity of some essential oils for translation in cancer therapy. *Evid Based Complement Alternat Med*, 2015;2015:397821.
5. Mannan A, Inayatullah S, Akhtar MZ, Qayyum M, Mirza B. Biological evaluation of wild thyme (*Thymus serpyllum*). *Pharm Biol*, 2009;47:628-633.
6. Kalember D, Kunicka A. Antibacterial and antifungal properties of essential oils. *Curr Med Chem*, 2003;10:813-829.

7. Raal A, Paaver U, Arak E, Orav A. Content and composition of the essential oil of *Thymus serpyllum* L. growing wild in Estonia. *Medicina (Kaunas)*, 2004;40:795-800.
8. Jain D, Pathak N, Khan S, Raghuram GV, Bhargava A, Samarth R, et al. Evaluation of Cytotoxicity and Anticarcinogenic Potential of Mentha Leaf Extracts. *Int J Toxicol*, 2011;30:225-236.
9. Tunón H, Olavsdotter C, Bohlin L. Evaluation of anti-inflammatory activity of some Swedish medicinal plants. Inhibition of prostaglandin biosynthesis and PAF-induced exocytosis. *J Ethnopharmacol*, 1995;48:61-76.
10. Candan F, Unlu M, Tepe B, Daferera D, Polissiou M, Sökmen A, et al. Antioxidant and antimicrobial activity of the essential oil and methanol extracts of *Achillea millefolium* subsp. *millefolium* Afan. (Asteraceae). *J Ethnopharmacol*, 2003;87:215-220.
11. Lin LT, Liu LT, Chiang LC, Lin CC. In vitro anti-hepatoma activity of fifteen natural medicines from Canada. *Phyther Res*, 2002;16:440-444.
12. Cavalcanti AM, Baggio CH, Freitas CS, Rieck L, de Sousa RS, Da Silva-Santos JE, et al. Safety and antiulcer efficacy studies of *Achillea millefolium* L. after chronic treatment in Wistar rats. *J Ethnopharmacol*, 2006;107:277-284.
13. González-Vallinas M, Reglero G, Ramírez de Molina A. Rosemary (*Rosmarinus officinalis* L.) Extract as a Potential Complementary Agent in Anticancer Therapy. *Nutr Cancer*, 2015;67:1223-1231.
14. Sadraei H, Asghari G, Naddafi A. Relaxant effect of essential oil and hydro-alcoholic extract of *Pycnocycla spinosa* Decne. ex Boiss. on ileum contractions. *Phyther Res*, 2003;17:645-649.
15. De Sousa AC, Alviano DS, Blank AF, Alves PB, Alviano CS, Gattass CR. *Melissa officinalis* L. essential oil: antitumoral and antioxidant activities. *J Pharm Pharmacol*, 2004;56:677-681.
16. Elmastaş M, Gülçin İ, Beydemir Ş, İrfan Küfrevioğlu Ö, Aboul-Enein HY. A Study on the In Vitro Antioxidant Activity of Juniper (*Juniperus communis* L.) Fruit Extracts. *Anal Lett*, 2006;39:47-65.
17. Glisic S, Milojevic S, Dimitrijevic-Brankovic S, Orlovic A, Skala D. Antimicrobial activity of the essential oil and different fractions of *Juniperus communis* L. and a comparison with some commercial antibiotics. *J Serb Chem Soc*, 2007;72:311-320.
18. Fernandez A, Cock IE. The therapeutic properties of *Juniperus communis* L. Antioxidant capacity, bacterial growth inhibition, anticancer activity and toxicity. *Pharmacogn J*, 2016;8:273-280.
19. Petrović SS, Matović M, Maksimović S. Prilog tehnologiji izdvajanja etarskog ulja iz lekovitih i aromatičnih biljaka principom vode i vodene pare. *Lek Sirovine*, 1996;15:41-48.
20. Petrovic SS, Ivanovic J, Milovanovic S, Zizovic I. Comparative analyses of the diffusion coefficients from thyme for different extraction processes. *J Serb Chem Soc*, 2012;77:799-813.
21. Skala D, Žizović I, Petrović SS. Etarska ulja - destilacija, ekstrakcija, izbor tehnologije i kvalitet. *Hem Ind*, 1999;53:123-138.
22. Milosevic M, Lazarevic M, Toljic B, Simonovic J, Trisic D, Nikolic N, et al. Characterization of stem-like cancer cells in basal cell carcinoma and its surgical margins. *Exp Dermatol*, 2018;27:1160-1165.
23. Lazarevic M, Milosevic M, Trisic D, Toljic B, Simonovic J, Nikolic N, et al. Putative cancer stem cells are present in surgical margins of oral squamous cell carcinoma. *JBUON*, 2018;23:1686-1692.
24. Mancic L, Djukic-Vukovic A, Dinic I, Nikolic MG, Rabasovic MD, Krmpot AJ, et al. NIR photo-driven upconversion in NaYF₄:Yb,Er/PLGA particles for in vitro bioimaging of cancer cells. *Mater Sci Eng C*, 2018;91:597-605.
25. Repetto G, del Peso A, Zurita JL. Neutral red uptake assay for the estimation of cell viability/ cytotoxicity. *Nat Protoc*, 2008;3:1125-1131.
26. De Oliveira PF, Alves JM, Damasceno JL, Oliveira RAM, Júnior Dias H, Crotti AEM, et al. Cytotoxicity screening of essential oils in cancer cell lines. *Braz J Pharmacogn*, 2015;25:183-188.
27. Mukherjee K, Basu S, Sarkar N, Ghosh C. Advances in cancer therapy with plant based natural products. *Curr Med Chem*, 2001;8:1467-1486.
28. Efferth T, Li PCH, Konkimalla VSB, Kaina B. From traditional Chinese medicine to rational cancer therapy. *Trends Mol Med*, 2007;13:353-361.
29. Turrini E, Ferruzzi L, Fimognari C. Natural compounds to overcome cancer chemoresistance: toxicological and clinical issues. *Expert Opin Drug Metab Toxicol*, 2014;10: 1677-1690.
30. Sertel S, Eichhorn T, Plinkert PK, Efferth T. Cytotoxicity of *Thymus vulgaris* essential oil towards human oral cavity squamous cell carcinoma. *Anticancer Res*, 2011;31:81-87.
31. Slameová D, Kubošková K, Horváthová E, Robichová S. Rosemary-stimulated reduction of DNA strand breaks and FPG-sensitive sites in mammalian cells treated with H₂O₂ or visible light-excited Methylene Blue. *Cancer Lett*, 2002;177:145-153.
32. Kontogianni VG, Tomic G, Nikolic I, Nerantzaki AA, Sayyad N, Stosic-Grujicic S, et al. Phytochemical profile of *Rosmarinus officinalis* and *Salvia officinalis* extracts and correlation to their antioxidant and anti-proliferative activity. *Food Chem*, 2013;136:120-129.
33. Cheung S, Tai J. Anti-proliferative and antioxidant properties of rosemary *Rosmarinus officinalis*. *Oncol Rep*, 2007;17:1525-1531.
34. González-Vallinas M, Molina S, Vicente G, Zarza V, Martín-Hernández R, García-Risco MR, et al. Expression of MicroRNA-15b and the glycosyltransferase GCNT3 correlates with antitumor efficacy of rosemary diterpenes in colon and pancreatic cancer. *PLoS One*, 2014;9: e98556.
35. Dilas S, Knez Z, Četojević-Simin D, Tumbas V, Škerget M, Čanadanović-Brunet J, et al. (2012) In vitro antioxidant and antiproliferative activity of three rosemary (*Rosmarinus officinalis* L.) extract formulations. *Int J Food Sci Technol*, 2012;47:2052-2062.
36. Moore J, Megaly M, MacNeil AJ, Klentrou P, Tsiani E. Rosemary extract reduces Akt/mTOR/p70S6K activation and inhibits proliferation and survival of A549 human lung cancer cells. *Biomed Pharmacother*, 2016;83:725-732.
37. Pereira JM, Lopes-Rodrigues V, Xavier CPR, Lima MJ, Lima RT, Ferreira ICFR, et al. An aqueous extract of *Tuberaria lignosa* inhibits cell growth, alters the cell cycle profile, and induces apoptosis of NCI-H460 tumor cells. *Molecules*, 2016;21:6:5.

38. Kotowski U, Heiduschka G, Schneider S, Enzenhofer E, Stanisz I, Schmid R, et al. P25 Effect of bioactive compounds of zingiber officinale roscoe on head and neck tumor cell lines. *Oral Oncol*, 2015;51:e50.

Conflict of Interests: Nothing to declair.

Financial Disclosure Statement: Nothing to declair.

Human Rights Statement: None required.

Animal Rights Statement: None required.

Received on May 2, 2019.

Revised on June 2, 2019.

Accepted on June 3, 2019.

Correspondence:

Jelena Milasin

Institute of Human Genetics

School of Dental Medicine

University of Belgrade,

Dr Subotica 4, 11000 Belgrade, Serbia

e-mail: jelena.milasin@stomf.bg.ac.rs